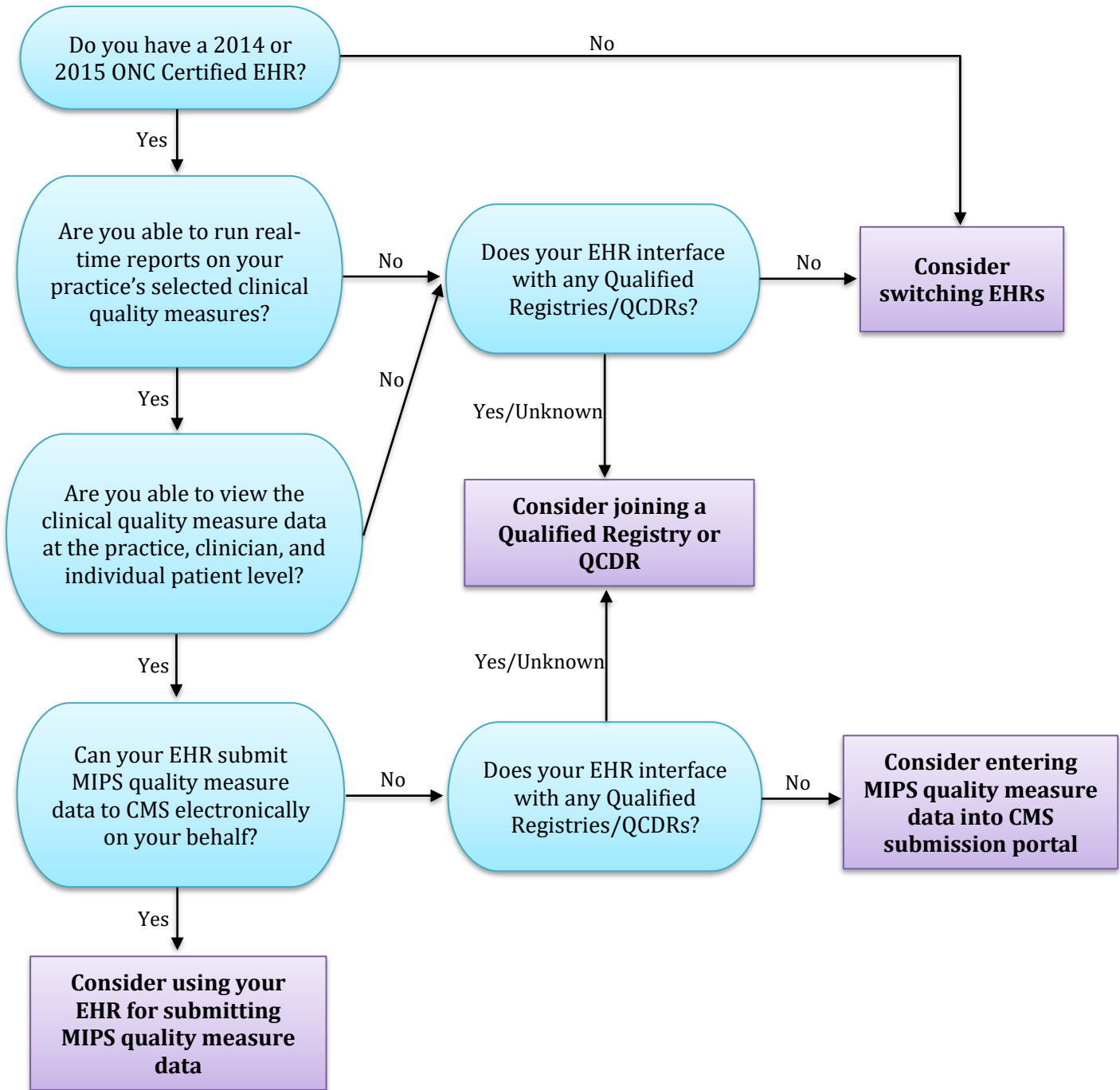


Is a Qualified Registry or a Qualified Clinical Data Registry (QCDR) a good option for my practice for MIPS reporting?

Step 1: Determine your EHR Functionality



Step 2: Selecting a Qualified Registry or Qualified Clinical Data Registry (QCDR)

What is a Qualified Registry?

- A Qualified Registry is a CMS-approved entity that collects clinical data from an individual MIPS clinician or group practice and submits it to CMS on behalf of the clinicians.
- An EHR can be approved to be a Qualified Registry.

What is a Qualified Clinical Data Registry (QCDR)?

- A QCDR is a CMS-approved entity that collects clinical data on behalf of clinicians for data submission. The QCDR reporting option is different from a Qualified Registry because it isn't limited to measures within the Quality Payment Program.
- A QCDR can also define their own quality measures for participants to report on for MIPS.

Benefits of using a Qualified Registry or QCDR

- QCDRs and Qualified Registries are CMS approved to report for three MIPS performance categories (Quality, Advancing Care Information, and Improvement Activities).
- Participants will receive performance feedback at least four times a year.

Considerations when looking for a Qualified Registry or QCDR

- Compatibility
 - Does your EHR currently interface with Qualified Registries or QCDRs?
 - If not, do they plan to in the future?
 - Does the Qualified Registry or QCDR offer manual data entry or does it directly pull data from your EHR?
- Implementation
 - What is the time frame required for implementation of the Qualified Registry or QCDR?
 - Does it require any in-office set up?
 - What costs are associated with implementation and/or participation?
 - Are the fees per clinician or per practice?
 - Does your EHR charge you a fee to use a Qualified Registry or QCDR?
 - What are the set up fees?
 - If set up through an interface, how frequently is data from your EHR uploaded to the Qualified Registry or QCDR?
 - What technical support does the Qualified Registry or QCDR provide?
- MIPS
 - Can it report on all 3 performance categories (Quality, Advancing Care Information, and Improvement Activities)?
 - Does it support the measures you are interested in reporting?
 - Does it support individual and group reporting?
 - Does it support all Pick Your Pace options?
 - Does it support electronic end-to-end submission for quality measures?
 - If the interface between your EHR and Qualified Registry/QCDR is not able to go live until mid-year, will data be pulled retroactively so you could submit for the full year?

Where do I start?

- Contact your EHR to see if they are a Qualified Registry.
- If participating in your specialty society, ask to see if they manage a Qualified Registry or QCDR. Membership with these organizations may allow you to use a Qualified Registry or QCDR for free.
- Contact your EHR to see if they are compatible with Qualified Registries or QCDRs.
- CMS will be releasing a list of approved MIPS Qualified Registries and QCDRs in the spring of 2017 (expected).